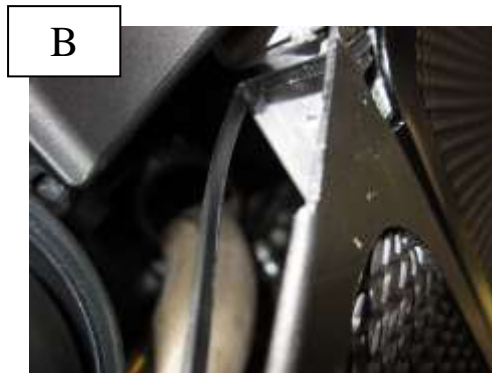
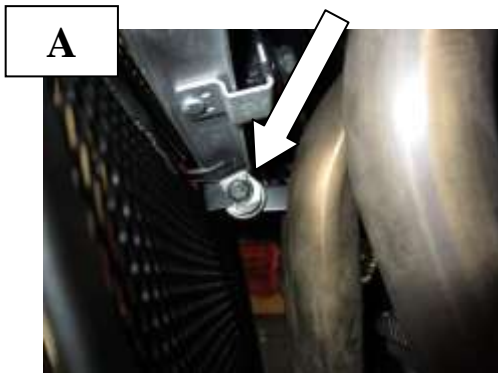




**Fitting Instructions for DG0008 BK Downpipe Grille**  
**Kawasaki Versys 1000 '12-**



**In This Kit There Should Be**  
**1x Downpipe Grille (DG0008)**  
**(Complete with spring clip)**  
**2x zip ties (220mm)**



- Undo and remove lower radiator mounting bolt (as shown in picture A).
- Fit the downpipe grille into position and replace lower radiator mounting bolt, do not fully tighten at this time.
- Push the spring clip over the exhaust down pipe.
- Using the two zip ties secure the downpipe grille against the bottom of the radiator (as shown in picture B) – DO NOT OVERTIGHTEN.
- Finally fully retighten the OEM lower radiator mounting bolt.

ISSUE 1 29/05/2012 (GTY/AR)

R&G Racing

Unit 1, Shelley's Lane, East Worldham, Alton, Hampshire, GU34 3AQ

Tel: +44 (0)1420 89007 Fax: +44 (0)1420 87301 [www.rg-racing.com](http://www.rg-racing.com) Email: [info@rg-racing.com](mailto:info@rg-racing.com)

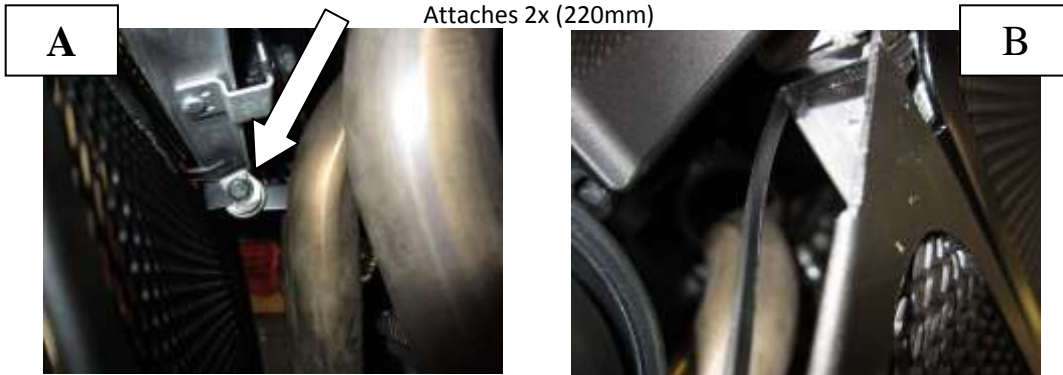


**Instructions de montage**  
DG0008 BK Grille de protection tuyaux d'échappement  
Kawasaki Versys 1000 '12-



**Le kit doit contenir:**

1x Grille de protection tuyaux d'échappement (DG0008)  
(Livré avec pince à ressort)  
Attaches 2x (220mm)



- Desserer puis enlever le boulon inférieur de fixation du radiateur (photo A).
- Mettre la grille en place et remettre le boulon, sans serrer complètement.
- Pousser la pince à ressort autour des tuyaux d'échappement
- En utilisant 2 attaches, fixer la grille contre le bas du radiateur (photo B) – Ne pas serrer complètement.
- Resserrer complètement le boulon de fixation d'origine.

ISSUE 1 29/05/2012 (GTY/AR)

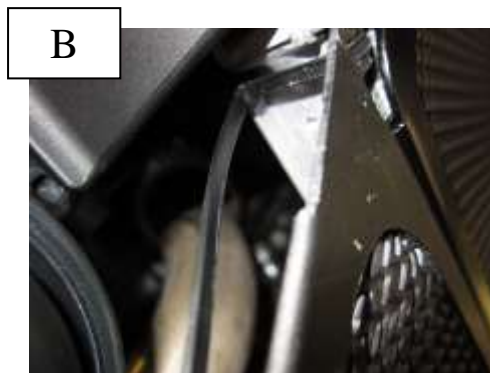
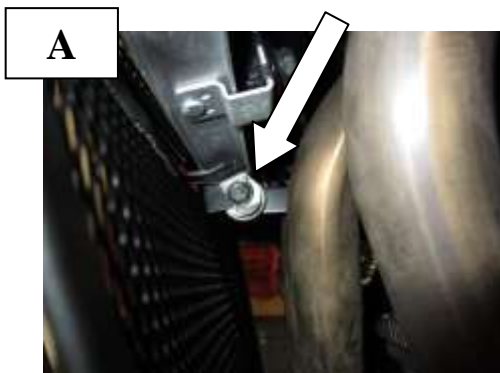
R&G Racing  
Unit 1, Shelley's Lane, East Worldham, Alton, Hampshire, GU34 3AQ  
Tel: +44 (0)1420 89007 Fax: +44 (0)1420 87301 [www.rg-racing.com](http://www.rg-racing.com) Email: [info@rg-racing.com](mailto:info@rg-racing.com)



**Montageanleitung für das Krümmerschutzgitter DG0008 BK**  
**Kawasaki Versys 1000 '12-**



**Dieser Kit enthält:**  
**1x Krümmerschutzgitter (DG0008)**  
**(inkl. Federklemme)**  
**2x Kabelbinder (220mm)**



- Lösen und entfernen Sie die untere Montageschraube am Kühler (siehe Abbildung A).
- Fixieren Sie das Krümmerschutzgitter in Position und vorsichtig die untere Montageschrauben für den Kühler eindrehen – ziehen Sie die Schraube aber noch nicht fest.
- Schieben Sie die Federklemme über den Auspuffkrümmer.
- Verwenden Sie die zwei Kabelbinder, um das Krümmerschutzgitter unten am Kühler zu befestigen (siehe Abbildung B) – NICHT ZU FEST ZIEHEN.
- Nun die Originalmontageschraube am Kühler festdrehen.



#### **CONSUMER NOTICE**

The catalogue description and any exhibition of samples are only broad indications of the Products and R&G may make design changes which do not diminish their performance or visual appeal and supplying them in such state shall conform to the order. The Buyer acknowledges no representation or warranty (other than as to title) has been given or will apply to the Products other than those in R&G's order or confirmation and the Buyer confirms it has chosen the Products as being of merchantable quality and suitable for its particular purposes. Where R&G fits the Products or undertakes other services it shall exercise reasonable skill and care and rectify any fault free of charge unless the workmanship has been disturbed. The Buyer is responsible for ensuring that the warranty on the motorcycle is not affected by the fitting of the Products. On return of any defective Products R&G shall at its option either supply a replacement or refund the purchase money but shall not be liable if the Products have been modified or used or maintained otherwise than in accordance with R&G's or manufacturer's instructions and good engineering practice or if the defect arises from accident or neglect. Other than identified above and subject to R&G not limiting its liability for causing death and personal injury, it shall not be liable for indirect or consequential loss and otherwise its liability shall be limited to the amounts paid by the Buyer for the Products or the fitting or service concerned. These terms do not affect the Buyer's statutory rights.

#### **R&G RACING RETURNS POLICY (NON-FAULTY GOODS)**

Returns must be pre-authorized (if not pre-authorized the return will be rejected). Goods may only be returned direct to us if they were purchased direct from us (customer must prove if necessary). Otherwise to be returned to original vendor. Goods must be in re-sellable condition, in the opinion of R&G Racing. All returns are subject to a 25% restocking and handling fee (25% of the gross value exc. P&P – at the prevailing price at time of purchase). The customer must pay any and all carriage charges. No returns of discontinued products, unless within 14 days of purchase. This policy does not affect your statutory rights and does not refer to faulty goods.

R&G Racing

Unit 1, Shelley's Lane, East Worldham, Alton, Hampshire, GU34 3AQ

Tel: +44 (0)1420 89007 Fax: +44 (0)1420 87301 [www.rg-racing.com](http://www.rg-racing.com) Email: [info@rg-racing.com](mailto:info@rg-racing.com)