



Fitting Instruction

Article-No. : **118H099**
Product : **Rear Set**
Manufacturer : **Honda**
Model : **CBR 600 RR 2003 - 2006**

Important:

Read this instruction manual carefully and mind all warnings and tips. You should do this work only if you're qualified; otherwise we recommend this mounting to be done by a qualified workshop. Improperly mounting of this kit can reduce the driveability of the motorcycle and may be a risk to your health and life.

Special works are marked with the following signs. Please take special care on these works.



Warning! Important mounting instruction. It shows risks to your life and health.



Tips for mounting and maintenance or to avoid damage.

Fitting:

Remove stock rear sets. The following parts will be used for your new rear set: left-handed ball joint with its counternut from the connection rod and right heel protector.



Rear sets are pre-assembled but all screws are not tightened! Always use locknuts or proper amount of medium thread-locking adhesive (e. g. Loctite 243). All details of assembling are shown on the backside drawing. All parts are welded into their bags as they belong together.



Replace the original brake light switch by a hydraulic one. It replaces the banjo bolt of the brake hose at the brake cylinder. **This is the highest point in the brake-system, proof proper air free installation!**

The tightening torques for connections to the frame refers to the manufacturers' instructions. Use the following torques for all the other screwing:

M5	=	5 - 6Nm
M6	=	9 - 10Nm
M8	=	18 - 22Nm
M10	=	30 - 35Nm



After installing rear set **test brake and gear shifting at low speed. If anything is not operating properly or braking efficiency is poor, testing at high speeds may result in death or serious injury!**

Maintenance:

i Periodically proof all functions during service intervals. Use **particle free (no MoS₂)** Lithium- or Barium-complex soap grease to maintain lever bushings.

Mount hydraulic brake light switch at master brake cylinder

Master brake cylinder

Brake cylinder adapter

Original counter nut M8

Screw in M8 x 40 from lever outside and attach bushing (t=11mm) and the original ball joint with an original washer on each side to the inside with flat locknut M8

Mount brake lever as shown in separate drawing for peg adapter

Fit the spring-bracket-bolt (=24,5 mm)

Hang in the spring

Fit the spring-bracket-bolt (= 16mm)

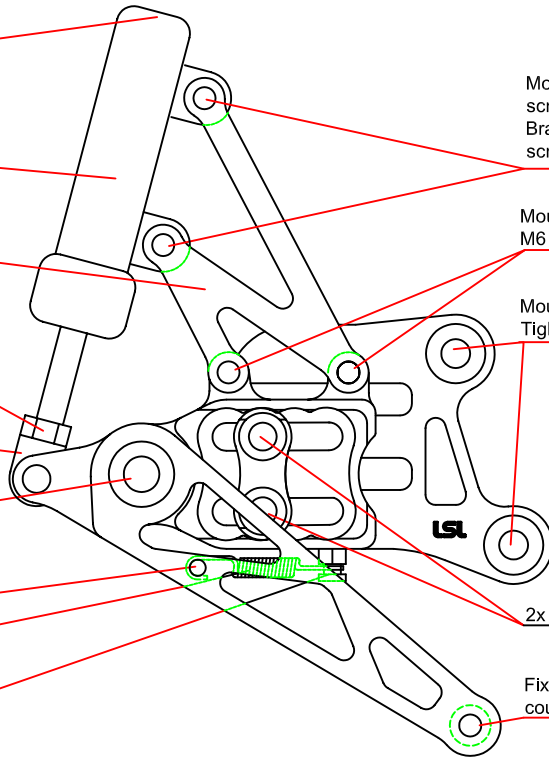
Mount original heel protector with original screws to the adapters outside and attach Brake cylinder to the inside. Use delivered screws M6x20 if you omit the heel protector.

Mount brake cylinder adapter with M6 x 16 on the outside

Mount stay with original screws
Tightening torque: 39Nm

2x screws M8x25

Fix brake lever knob with countersunk M6 x16



Rear set
Honda CBR 600 RR '03 -
Fitting instruction brake side

Use the original gearbox lever, left-handed ball joint and the counter nut

Use the attached spacers 1 x 20mm or 1 x 10mm for your individual position

Attach the gearshift rod with M6 x 18 and washer between lever and ball joint to the inside

Counter nut M6

Fix gear-shift lever knob with M6 x 18 and corrugated washer

Attach gear-shift lever bracket with M8 x 30 and spacer (t=13mm) to the mounting device of the original gear-shift lever

Mount gear-shift lever as shown in separate drawing for peg adapter

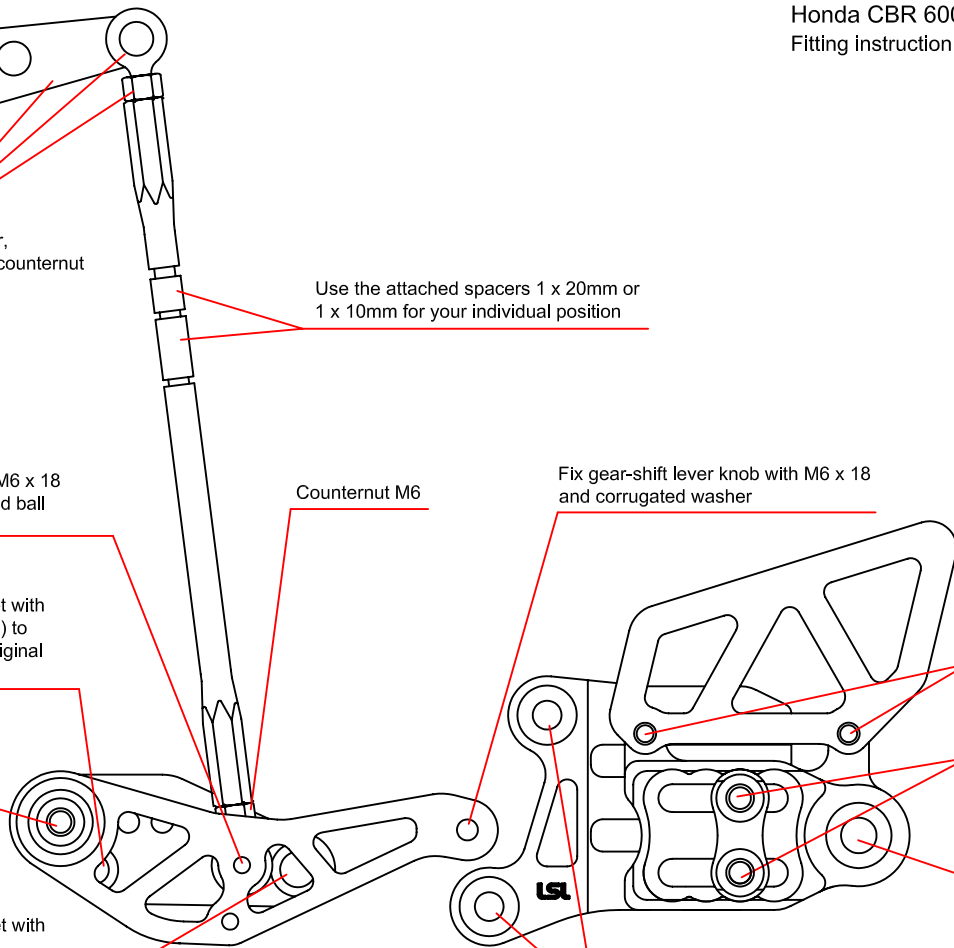
Attach gear-shift lever bracket with M10 x 1,25 x 65 and spacer (t=32mm) to the mounting device of the side stand

Attach the heel protector with M6 x 12 to the outside of stay

2x screws M8x25

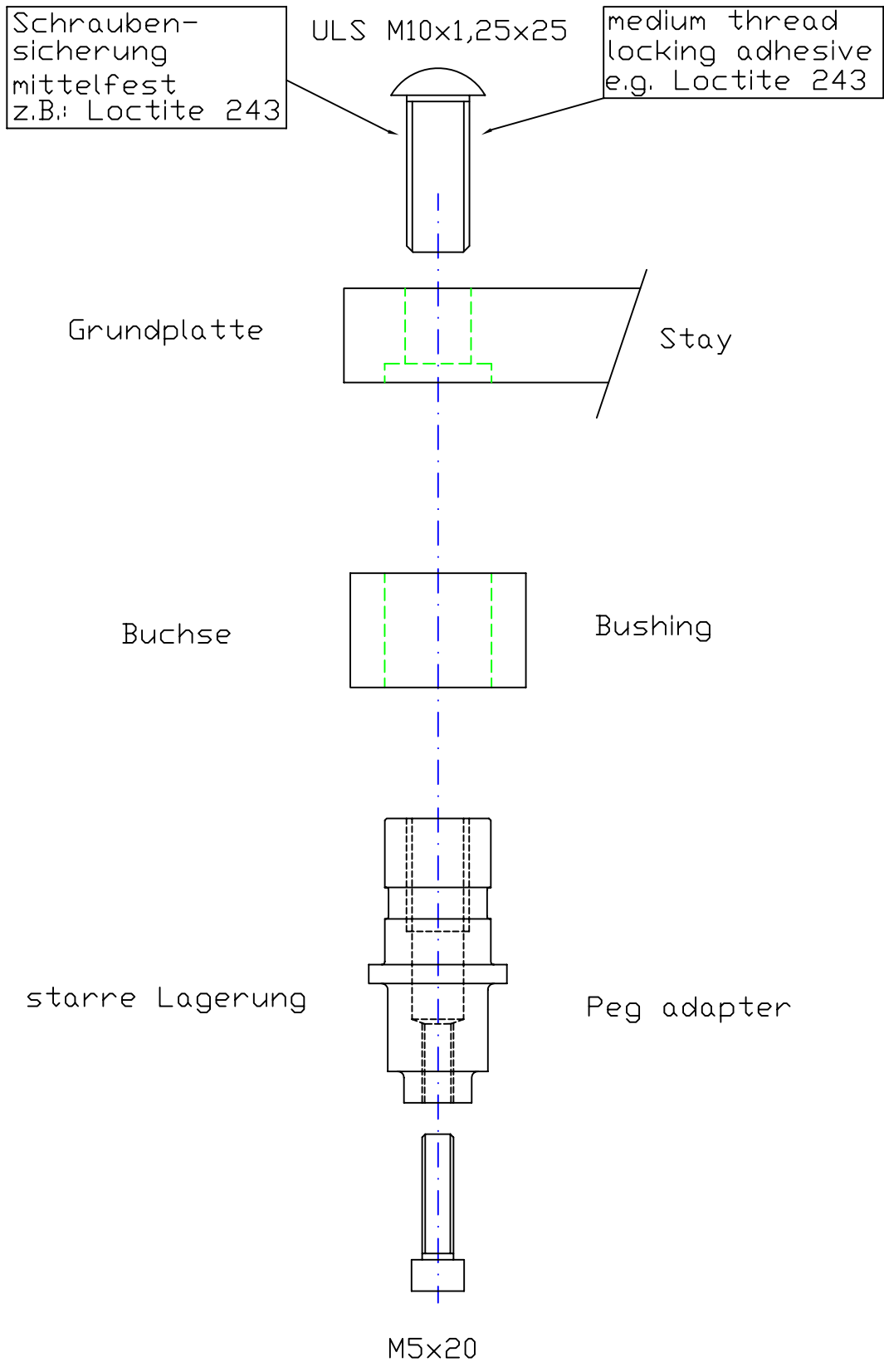
Mount peg adapter and bushing as shown in separate drawing for peg adapter

Mount stay with original screws
Tightening torque: 39Nm

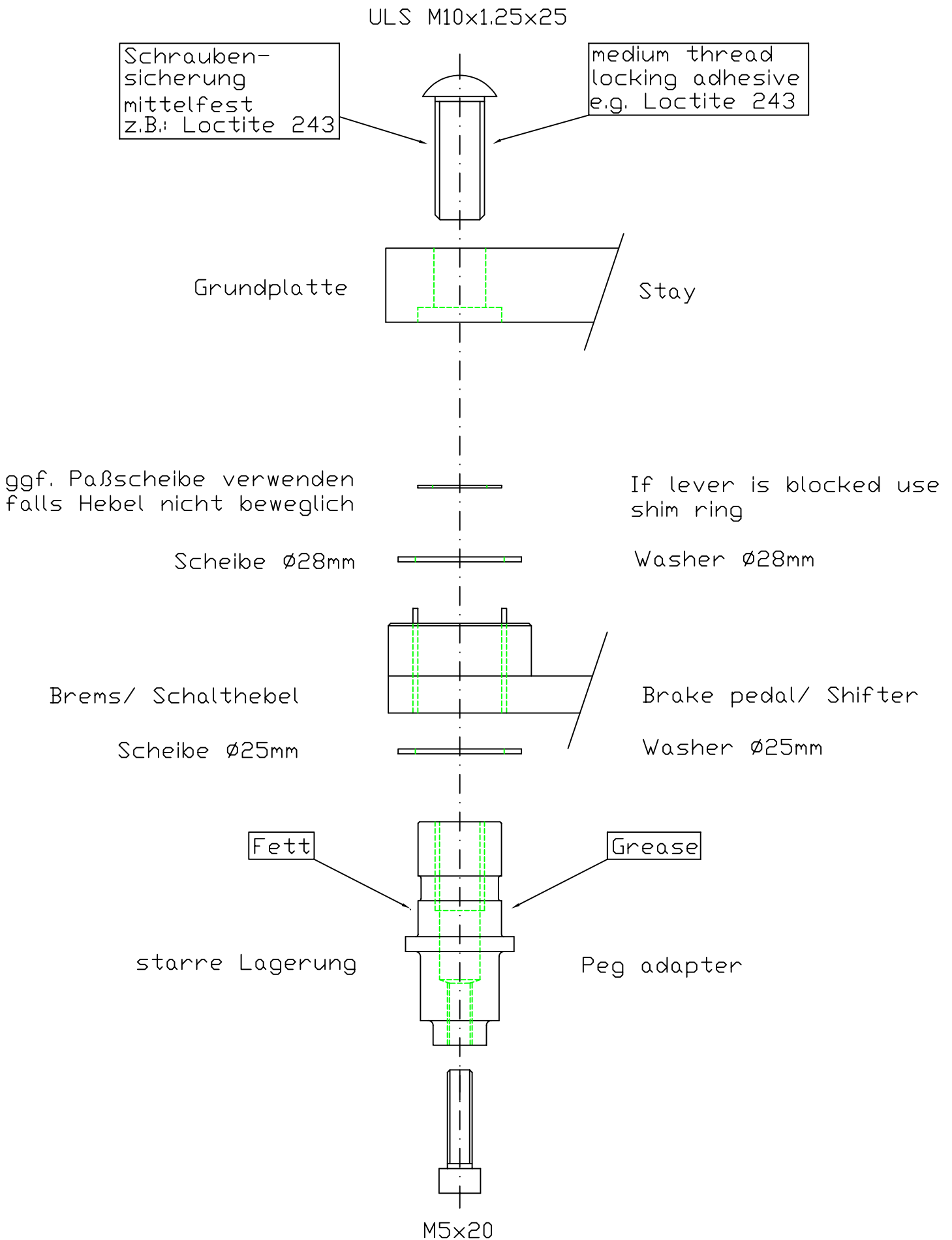


Rear set
Honda CBR 600 RR '03 -
Fitting instruction gear-shift side

Linke Seite / Left side



Rechte Seite / Right side



Linke Seite vorne / left front side

