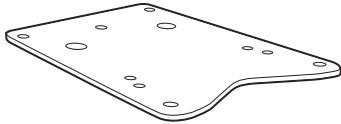
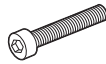


SHAD

ZONTES ZT 125-Z2 '21 TOP MASTER ZOZT11ST



1 262758 x1



2 304037 x2
M6 x 35
DIN 912



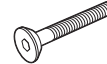
3 303017 x6
Ø6



4 302021 x4
M6



5 262759 x1



6 304029 x2
M6 x 35
DIN 7991



7 262760 x1

WARNING!

- Compatible with Small (D1B29PA) & Medium (D1B40PA) mounting plates. (NOTE): Compatible with TOP CASES SH26 – SH47 only.
- **ATTENTION:** top fitting not compatible with aluminium mounting plate (D1BTRPA) or Large mounting plate (D1B481PA).

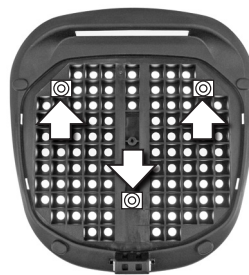
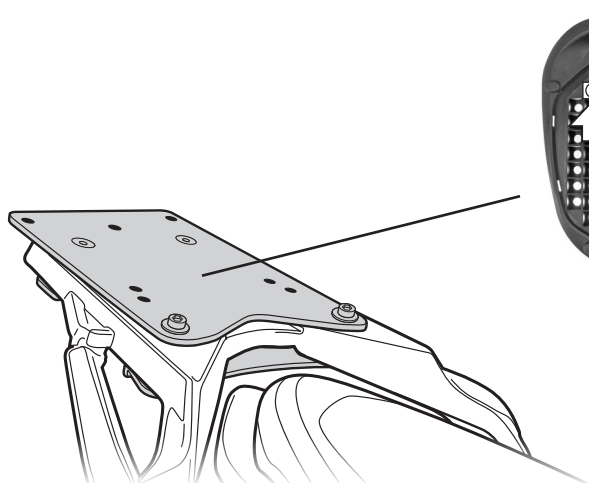
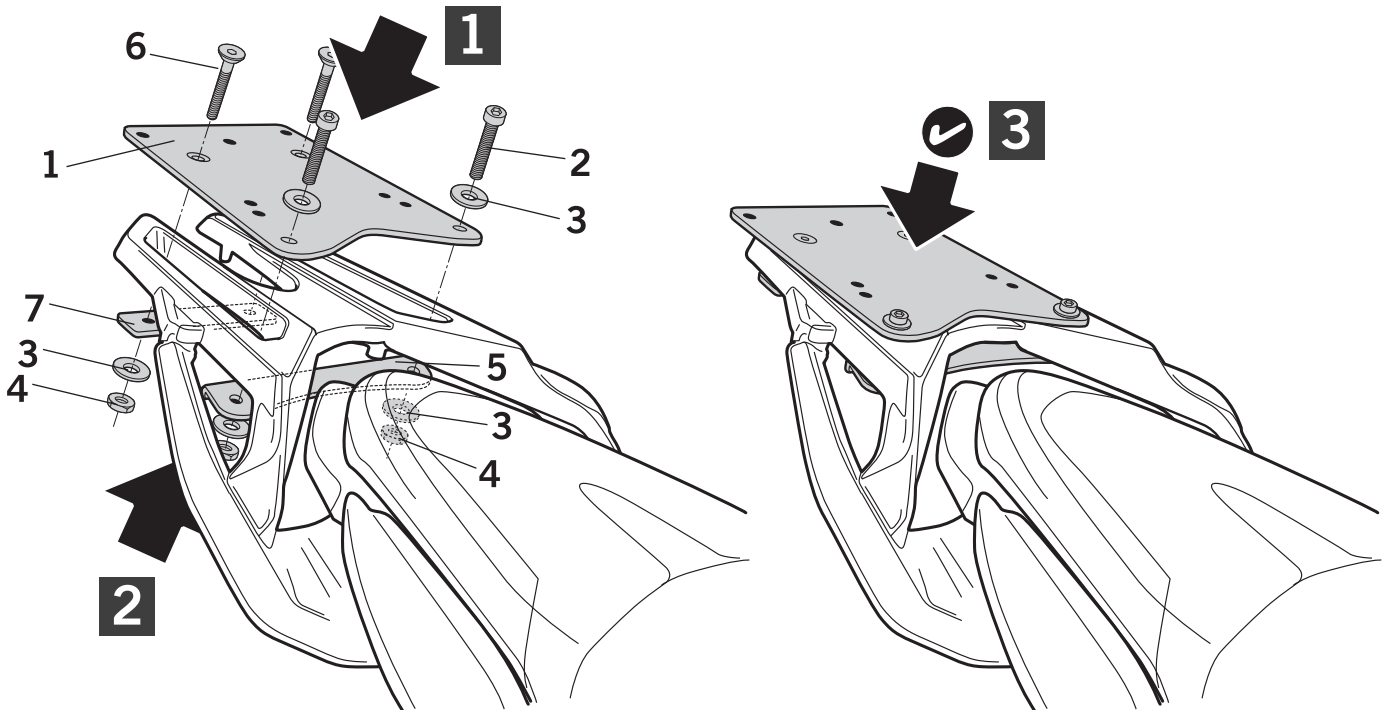
GB Do not fully tighten the screws until it is ensured that the KIT is correctly attached and aligned.

E No apretar los tornillos del todo hasta asegurarse que el KIT está correctamente colocado y alineado.

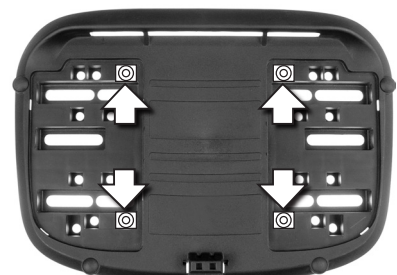
D Ziehen Sie die Schrauben nicht ganz fest, bevor Sie sich nicht vergewissert haben, daß der Bausatz korrekt eingestellt und ausgerichtet ist.

I Non stringere del tutto le viti fin tanto non si è sicuri che il kit è collocato correttamente e allineato.

F Ne pas serrer les vis avant d'être sûr que le KIT soit correctement positionné et ajusté.



SH29



SH40

www.shad.es

REF. 500479 Edición 1ª

IMPORTANT: Based on European models. For compatibility with models in other continents, check www.shad.es