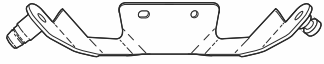


# SHAD

## SYM SYMPHONY 125 ST ( '15 - '20) SHAD LOCKS S0SM10SC

SIZE  
**3**

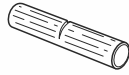
BCN



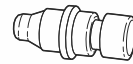
**1** 262986 x 1



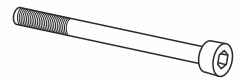
**2** 262926 x 1  
16 x M8 x 13



**3** 262925 x 1



**4** 262987 x 1



**5** 304429 X 1  
M8x100 DIN 912

### WARNING!

**(GB)**

Tight firmly the pivot.  
Make sure that the pivot  
is firmly tight.  
LUBRICATE ONLY WITH  
WD-40 OIL!

**(E)**

Apretar el pivote  
fuertemente. Asegurarse de  
que el pivote queda  
totalmente fijado. LUBRICAR  
SOLO CON ACEITE WD-40!

**(D)**

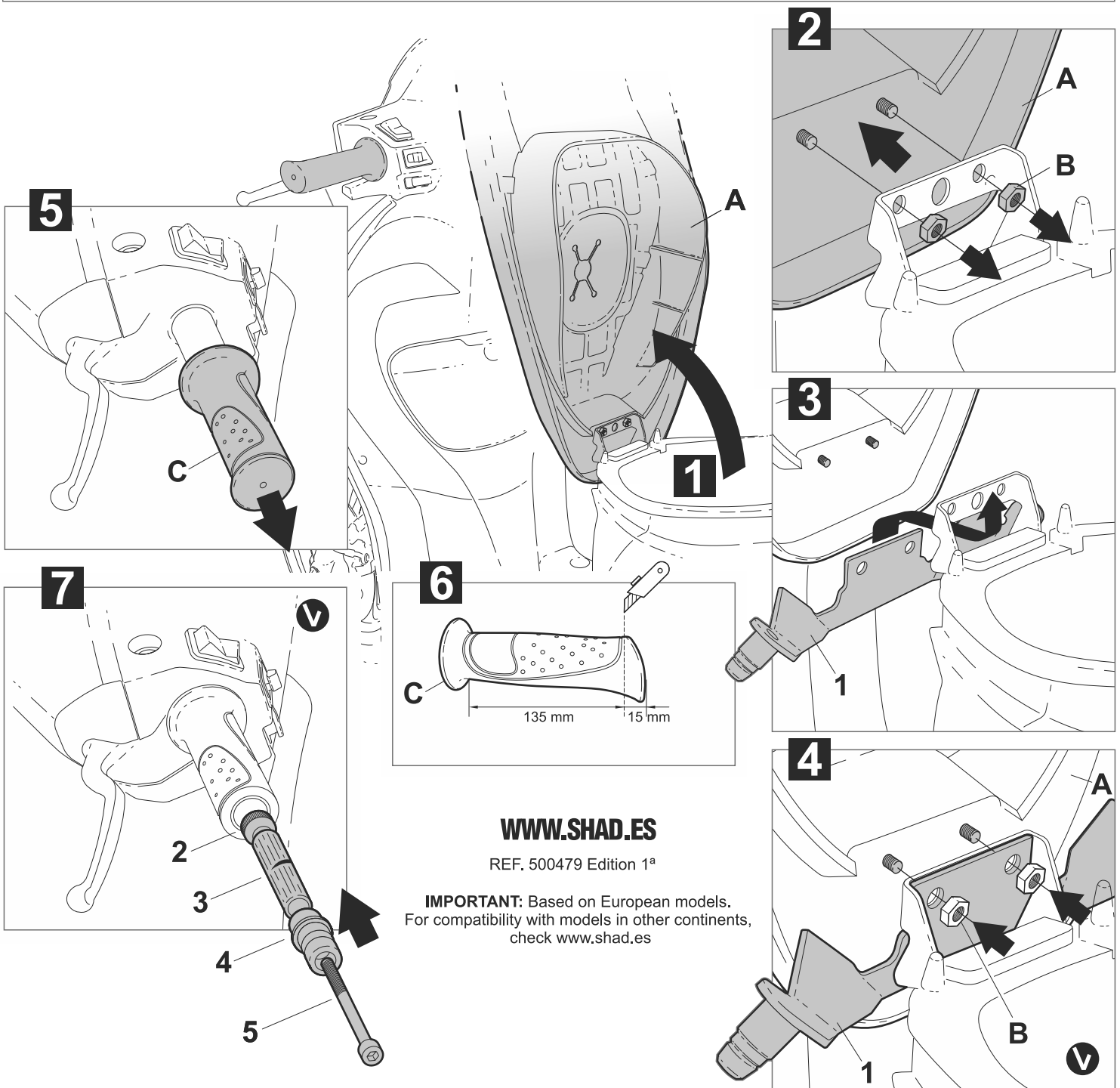
Zapfen besonders fest anziehen und  
sicherstellen, dass er sich nicht  
mehr bewegen kann. ALS  
SCHMIERMITTEL IST NUR ÖL VOM  
TYP (WD 40) ZU VERWENDEN

**(I)**

Premere il perno con  
forza. Assicurarsi che il  
perno sia opletamente  
fissato. LUBRIFICARE  
SOLO CON OLIO WD-40!

**(F)**

Serrer fortement le pivot.  
S'assurer qu'il reste  
totalment fixé.  
AVEC WD-40!



[WWW.SHAD.ES](http://WWW.SHAD.ES)

REF. 500479 Edition 1<sup>a</sup>

**IMPORTANT:** Based on European models.  
For compatibility with models in other continents,  
check [www.shad.es](http://www.shad.es)