



C-RACER
www.c-racer.com

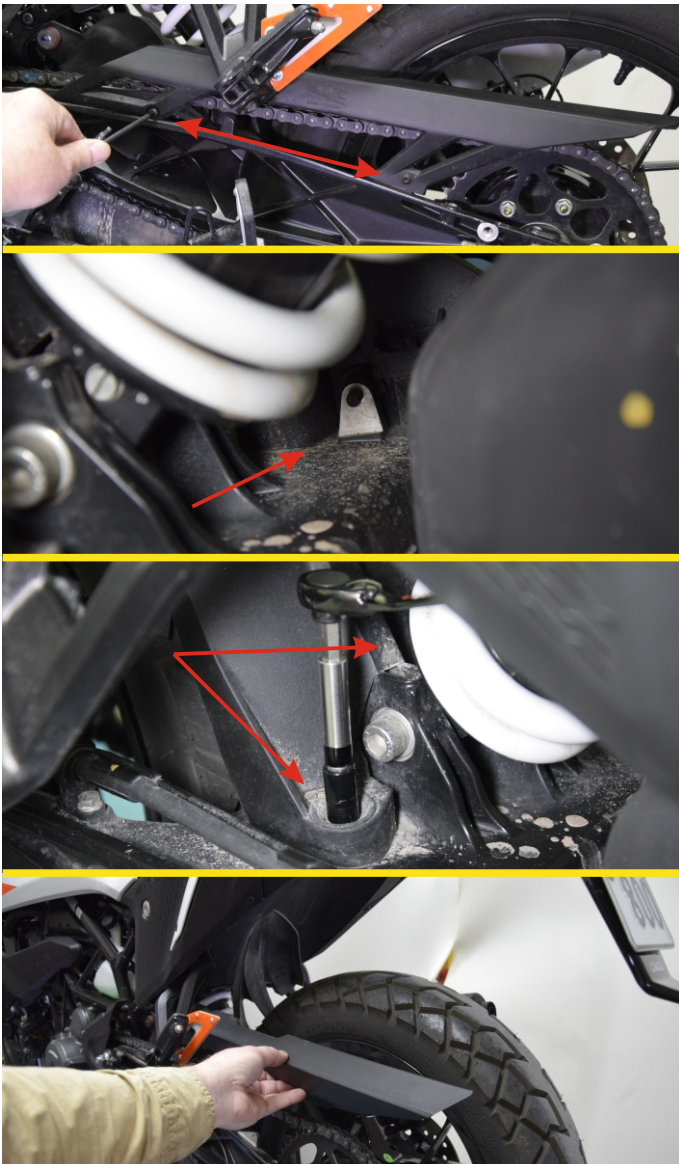
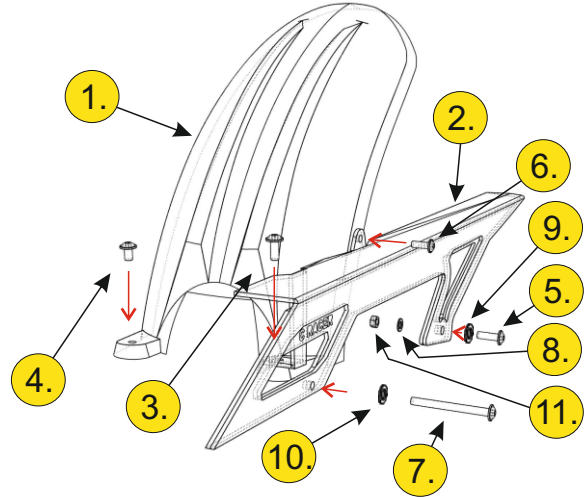
INSTRUCTION

Page 1/2

Model	Product	Code
KTM 390/290 Adventure	Rear Hugger With Chain Guard	RH-KTM390-SB / BS

CONTENTS

1. 1pcs Plastic Rear Hugger
2. 1pcs Aluminio Chain Guard
3. 1pcs screws M6X15 (allen-round head-washer)
4. 1pcs screws M6X10 (allen-round head-washer)
5. 1pcs screws M6X25 (allen-round head-washer)
6. 1pcs screws M5X15 (allen-round head-washer)
7. 1pcs screws M5X55 (allen-round head-washer)
8. 1pcs washers 6X12
9. 1pcs plastic washers 6X18
10. 1pcs plastic washers 5X15
11. 1pcs safety nuts M6



To place the new fender, you must remove the old one. In the photos you may find the order and the place of the screws you must remove.

First remove the cover from the front left footrest, this helps to remove the front screw of the chain guard, also remove the one at the back side.

After that remove the nut, (not easily seen). (In the second photograph you will see the place of the nut, only seen from the right side under the shock absorber.)

Then remove the two main screws. (In the third photograph there is only the right side, on the left side there is the same screw)

After you have removed all the screws you must open the back side of the chain guard which covers the base on which it was mounted, to get it through from the chain. Then rotate the fender and because it is elastic you can carefully/easily remove it.



Put the chain guard in place and pass the screws (blueprint 7-10 forward & 5-8-9-11 for back) without tightening them, just touch them to hold the product in place.

Locally remove the protective film from fender only where it will be screwed and place it on its position. Then insert the screws (layout screws 3 & 4). And just pass them. Last you put the side screw that connects the fender with chain protector.

All screws have an adjustment margin. Align the fender and tighten the screws in the order you put them. When it is finished, remove the protective film as well from the fender.

With this product you can also put ON-Off tires, there is enough gap. Of course, it is not recommended for on-off use. You can remove the fender and leave only the chain guard.

We wish you many and dry kilometers!
Thank you for choosing one of our products.



The product is for race use only

For any further information please do not hesitate to contact us: Tel.: +30 2108075387 Email: info@c-racer.com