



C-RACER
www.c-racer.com

INSTRUCTION

Page 1/2

Model	Product	Code
KTM 390/290 Adventure	Front Side Cover	FSC-KTM390ADV-O & W

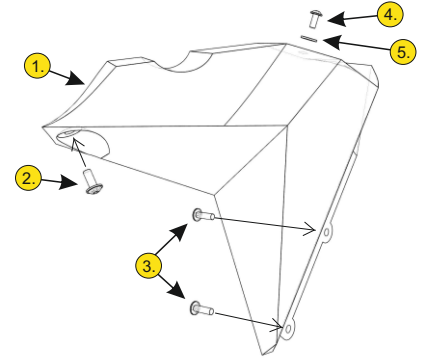
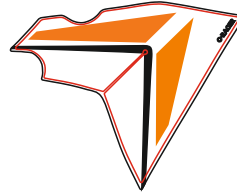
CONTENTS

1. 2pcs Plastic Covers
2. 2pcs screws M6X15 (allen-round head-washer)
3. 4pcs screws M6X20 (allen-round head-washer)
4. 2pcs screws M5X15 (allen-round head-washer)
5. 2pcs washers plastic 5X15
6. 2pcs washers plastic 6X18

FSC-KTM390ADV-O



FSC-KTM390ADV-W



On this instruction the photographs and the description are about the left side, the same thing applies for the right side.

First you must remove the side covers and then also remove the screws inside the tank cover.

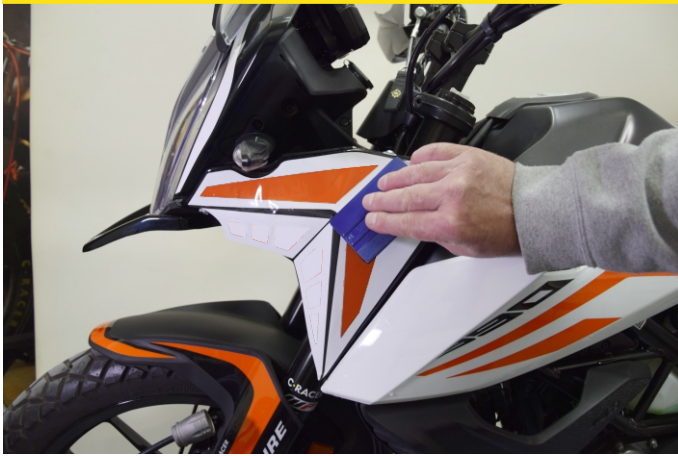
After that fit the new cover and hold it with the screw.

Continuing screw the 2 internal screws and at last the above one.

Before you mount all the screws be sure that the gap between the tank and the cover is equal. Do the same process for the other side.

INSTALLATION OF STICKERS

It is better to be placed by professionals.
If you think you have the skills, then follow the Instructions.
Clean the surface very well.



Spray with soap and water lightly all over the surface.
Remove the protective paper from the sticker and spray this too and place it on the surface.
Adjust its position so that it is in the center and check its position back and forth.

Once you make sure it is in the right place then start pushing in the center so that it sticks only there.
Then with a soft spatula start to dispense the water and bubbles to the outside.
You can heat it very lightly and carefully to help trapped bubbles to go outside.
When all the water has left the sticker, press very well the edges.



Thank you for choosing our products.

The product is for race use only

For any further information please do not hesitate to contact us: Tel.: +30 2108075387 Email: info@c-racer.com