

INSTRUCTION

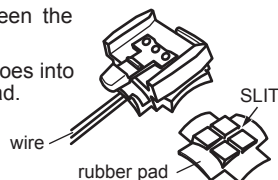
⚠ CAUTION

- Read all instructions before use.
- May need to purchase optional parts for some applications. (See the optional parts section in this manual.)
- Use NANO gauges for the intended purpose of use.
- DO NOT disassemble NANO gauges.
- DO NOT leave NANO gauges in high heat.
- DO NOT hit, drop and/or give a shock on NANO gauges.
- Avoid contact with gasoline, brake fluid or other chemicals.
- Rubber mounting is recommended for vehicles with much vibration.
- After installation, check to see if all the parts are correctly installed, and to see if all the screws are properly tightened.
- Periodical inspection of the installed parts is required every 500km(300mile). If anything unusual may be found while driving, pull over at a safe place to check.

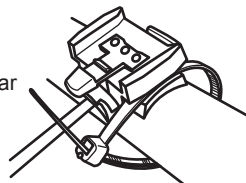
MOUNTING INSTRUCTION

Place the rubber pad between the bracket and handlebar.

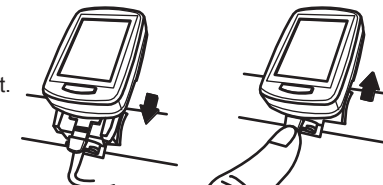
⚠ Be sure that the wire goes into the slit of the rubber pad.



Mount the bracket on handlebar by two cable ties



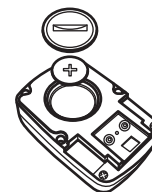
To attach the gauge unit, slide the unit into the bracket. To detach, press the knob and slide the unit out.



BATTERY REPLACEMENT

Replace battery(CR2032) when low battery warning icon flashes.

* Positive(+) side of battery to face upward

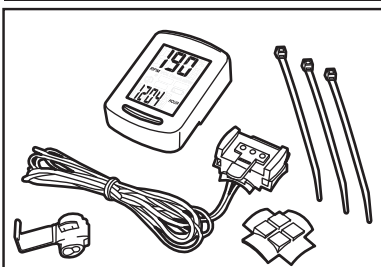


NANO-TACH

PRODUCT FEATURES

- Tachometer 0-20,000 rpm
- Hourmeter (Not Resettable), Range : 0.0-9999.9 Hours
- Resettable Hourmeter, Range : 0.0-9999.9 Hours
- Maximum rpm memory and recall
- Clock, AM/PM Display ONLY
- Low Battery Warning
- Auto On & Off
- Detachable Unit
- Simple Installation and Operation
- Replaceable Battery (CR2032)
- Waterproof Housing

COMPONENTS



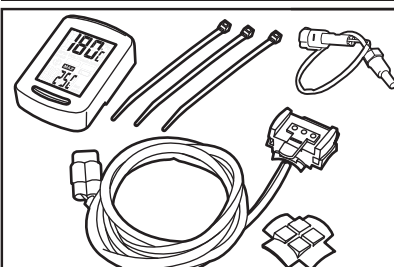
Components	Q' TY
Gauge Unit	1pc
Bracket & Wires	1pc
Rubber Pad	1pc
Cable Tie	3pcs
Wire Coupler	1pc

NANO-TEMP

PRODUCT FEATURES

- Engine Temperature Gauge, Range : 0 - 270°C (32 - 518°F)
- Ambient Temperature Gauge, Range : 0 - 60°C(32-140°F)
- Maximum Temp. memory and recall (Engine Temp.)
- Clock, AM/PM Display ONLY
- Low Battery Warning
- Auto Off, User-settable "Auto-Off Temp."
- Detachable Unit
- Simple Installation and Operation
- Replaceable Battery (CR2032)
- Waterproof Housing

COMPONENTS



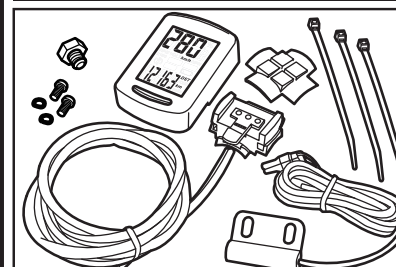
Components	Q' TY
Gauge Unit	1pc
Bracket & Wires	1pc
Rubber Pad	1pc
Cable Tie	3pcs
Temperature Sensor	1pc

NANO-SPD

PRODUCT FEATURES

- Speedometer
- Odometer, Range : 0.0-99999.9 km/mile
- Trip Odometer (Resettable) , Range : 0.0-99999.9 km/mile
- Clock, AM/PM Display only
- Low Battery Warning
- Auto On & Off
- Detachable Unit
- Simple Installation and Operation
- Replaceable Battery (CR2032)
- Waterproof Housing

COMPONENTS



Components	Q' TY
Gauge Unit	1pc
Bracket & Wires	1pc
Rubber Pad	1pc
Cable Tie	3pcs
Speed Sensor & Magnet	1set