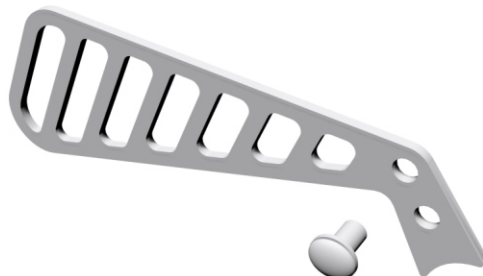


## INSTALLATION INSTRUCTION

Model	Product	Code
HONDA Monkey 125	Tube Guard in Silver & black color	CP-HM-S & CP-HM-B



### CONTENTS

1. 1pcs Aluminum Metal Base(CG-HM)
2. 1pcs M6X10 allen oval screws

### MATERIAL DESCRIPTION

The product is made of aluminum 3 mm thick and painted in black or silver color, with electrostatic paint (CP-HM-S silver color & CP-HM-B black color). The screws, nuts, washers and all the rest required for the installation are galvanized in silver color.



These are the contents you will find inside product packaging. Also in the package you will find a card containing the link to download the PDF file with the installation instructions detailed step-by-step with photographic material.

Before starting the installation, read the instructions to have a better idea about the tools you will need and the required skills. Otherwise we suggest to contact a professional.

**The product is for race use only**

For any further information please do not hesitate to contact us: Tel.: +30 2108075387 Email: [info@c-racer.com](mailto:info@c-racer.com)



Remove the screw holding the old protector and remove the it from the motorcycle.



Place the new guard in the same position as the old one. Screw it in with the new screw provided in the package and tighten it well.



This will be your final look. Enjoy your ride!