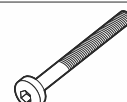
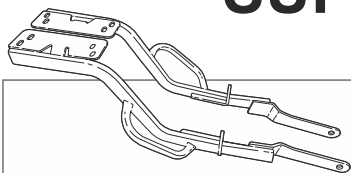


SHAD

SUPER SOCO TC 50 / TC 125 '19- TOP MASTER S0TC53ST

BCN



1 263297 x 1 →
263298 x 1 ←

2 260648 x 2
Ø16 Ø9 x 5

3 303045 x 4
Ø8

4 303027 x 2
Ø8

5 304053 x 2
M8x30 DIN 7380

6 304169 x 2
M8x50 DIN 7380

7 302024 x 2
M8

WARNING!

Compatible with Small (D1B29PA) & Medium (D1B40PA) mounting plates. (NOTE): Compatible with TOP CASES SH26 – SH47 only.
ATTENTION: top fitting not compatible with aluminium mounting plate (D1BTRPA) or Large mounting plate (D1B481PA).

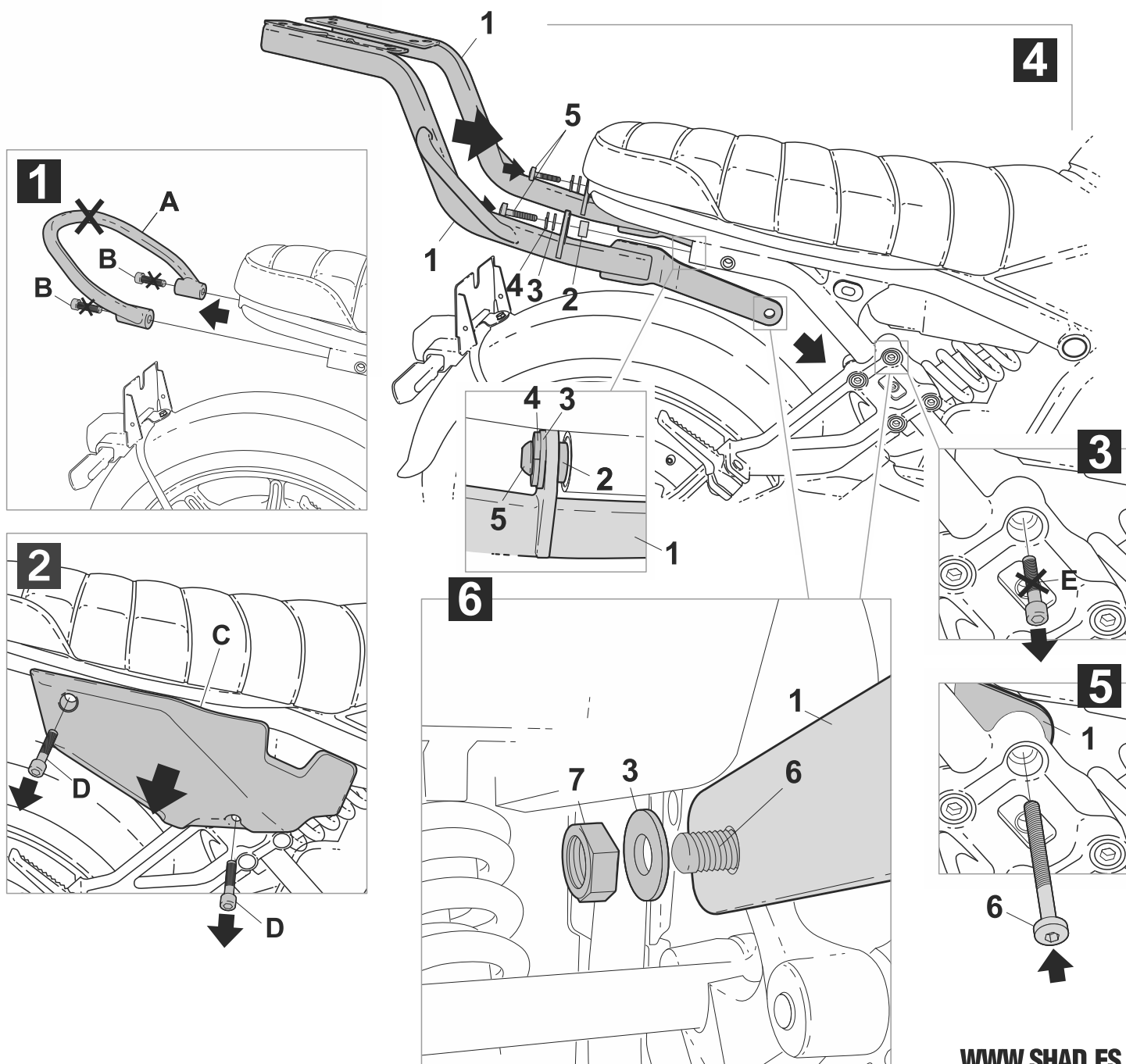
GB Do not fully tighten the screws until it is ensured that the KIT is correctly attached and aligned. Check tightness every 4 months..

E No apretar los tornillos del todo hasta asegurarse que el KIT está correctamente colocado y alineado. Repasar apriete cada 4 meses.

D Ziehen Sie die Schrauben nicht ganz fest, bevor Sie sich nicht vergewissert haben, daß der Bausatz korrekt eingestellt und ausgerichtet ist. Alle 4 Monate Drehmoment überprüfen.

I Non stringere del tutto le viti fin tanto non si è sicuri che il kit è collocato correttamente e allineato. Controllare il serraggio delle viti ogni 4 mesi.

F Ne pas serrer les vis avant d'être sûr que le KIT soit correctement positionné et ajusté. Vérifier le serrage des vis tous les 4 mois.



IMPORTANT: Based on European models. For compatibility with models in other continen check www.shad.es

WWW.SHAD.ES

REF. 500479 Edition 1ª