



Fitting Instruction

Article-No. : 110T020 & 110T020T
Product : Rear Set
Manufacturer : Triumph
Model : T-Bird Sport

Important:

Read this instruction manual carefully and mind all warnings and tips. You should do this work only if you're qualified; otherwise we recommend this mounting to be done by a qualified workshop. Improperly mounting of this kit can reduce the driveability of the motorcycle and may be a risk to your health and life.

Special works are marked with the following signs. Please take special care on these works.



Warning! Important mounting instruction. It shows risks to your life and health.



Tips for mounting and maintenance or to avoid damage.

Fitting:

Remove stock rear sets. The following parts will be used for your new rear set: Left-handed ball joint and counter nut of the connection rod.



Rear sets are premount but all screws are not tightened! Always use locknuts or proper amount of medium thread-locking adhesive (i.e. Loctite 243). All details of assembling are shown on the backside drawing. All parts are welded into their bags as they belong together.



If this rear set is mounted on the model with both exhaust-pipes on the right you have to push the cover of the upper pipe as far as possible towards the front to gain clearance between brake lever and exhaust.

The tightening torques for connections to the frame refers to the manufacturers' instructions. Use the following torques for all the other screwing:

M5	=	6Nm	=	4.43lbf ft
M6	=	10Nm	=	7.38lbf ft
M8	=	20Nm	=	14.75lbf ft
M10x1.25	=	30Nm	=	22.13lbf ft

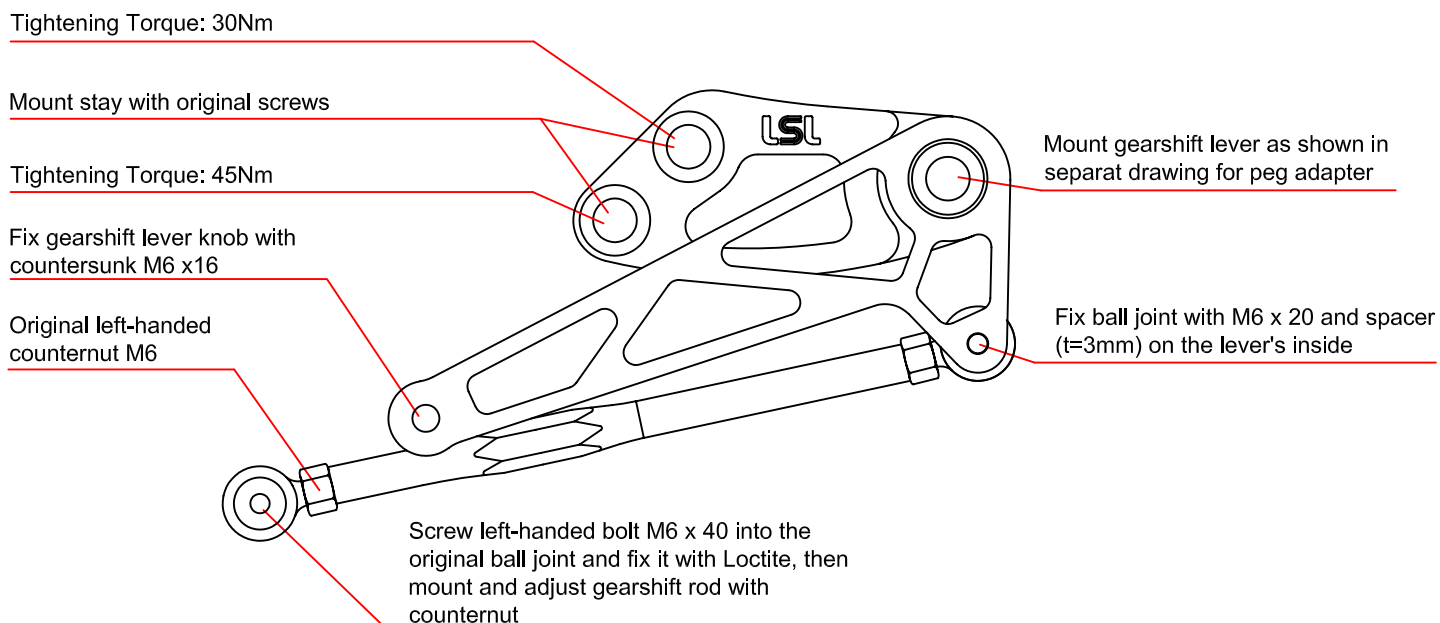
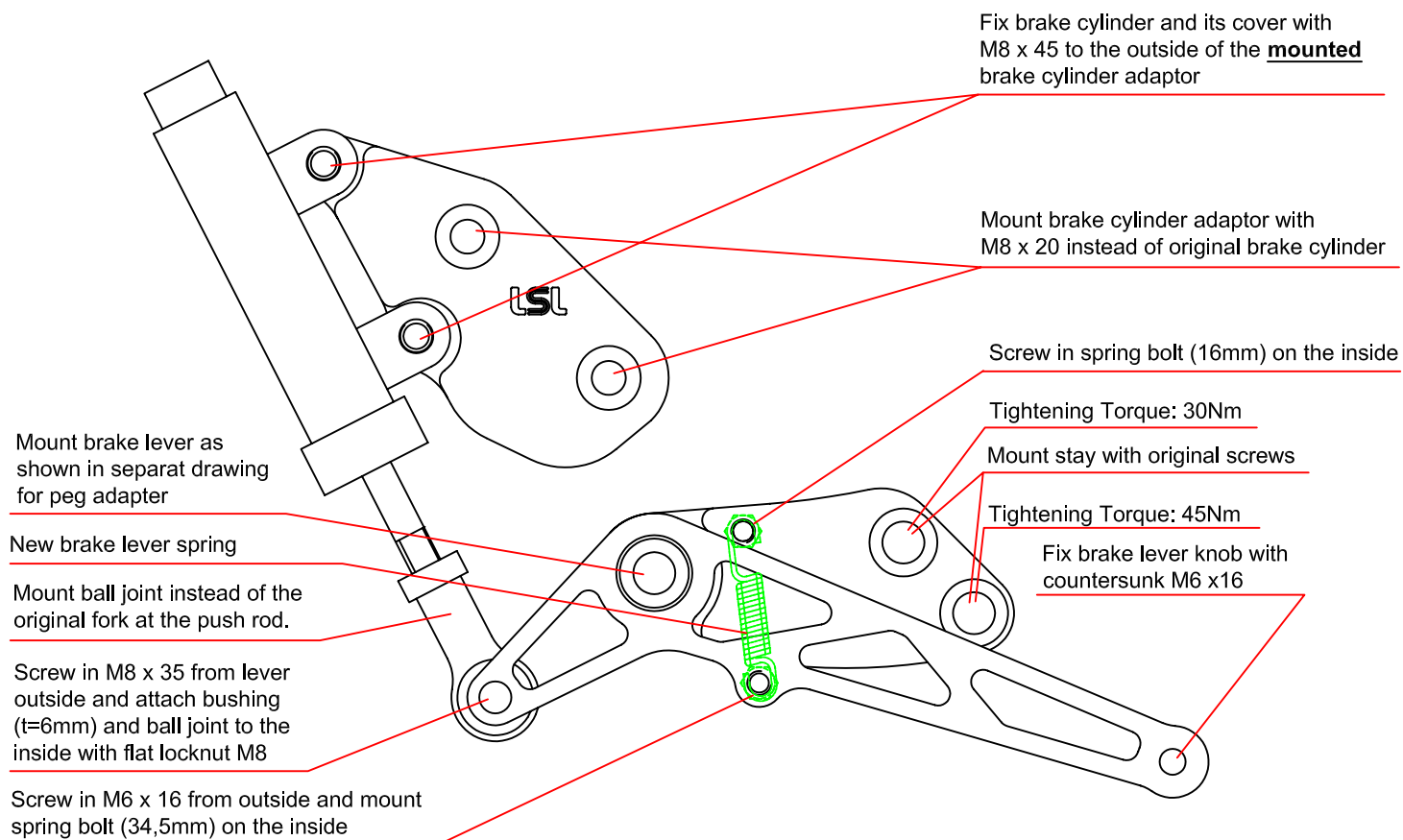


After installing your new rear set **test brake and gear shifting at low speed. If anything is not operating properly or braking efficiency is poor, testing at high speeds may result in death or serious injury!**

Maintenance:



Periodically proof all functions during service intervals. Use common **particle free (no MoS₂)** bearing grease to maintain lever bushings.



Rechte Seite / right side

Schrauben-
sicherung
mittelfest
z.B.: Loctite 243

medium thread
locking adhesive
f.e. loctite 243

ULS M10x1,25x25

ULS M10x1.25x25

Grundplatte

Stay

Paßscheibe $\varnothing 10 \times \varnothing 16 \times 0,2$
verwenden, falls Hebel
nicht beweglich

If lever is blocked use
shim ring $\varnothing 10 \times \varnothing 16 \times 0,2$

Paßscheibe $\varnothing 10 \times \varnothing 16 \times 0,5$

shim ring $\varnothing 10 \times \varnothing 16 \times 0,5$

Scheibe $\varnothing 25\text{mm}$

Washer $\varnothing 25\text{mm}$

Bremshebel

Brake pedal

Scheibe $\varnothing 25\text{mm}$

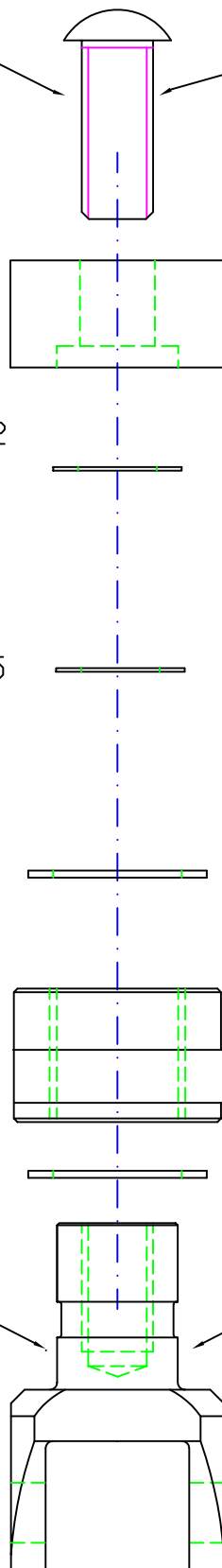
Washer $\varnothing 25\text{mm}$

Fett

Grease

Klappbare/
starre Lagerung

Adaptation



Linke Seite / left side

