



# Fitting Instruction

Article-No. : 118H117RR  
Product : **Rear Set "2-Slide" with reversed shifting**  
Vehicle-Manufacturer : **Honda**  
Model : **CBR 600RR 2007→**

## Important:

Read this instruction manual carefully and mind all warnings and tips. You should do this work only if you're qualified; otherwise we recommend this mounting to be done by a qualified workshop. Improperly mounting of this kit can reduce the driveability of the motorcycle and may be a risk to your health and life.

Special works are marked with the following signs. Please take special care on these works.



**Warning! Important mounting instruction. It shows risks to your life and health.**



**Tips for mounting and maintenance or to avoid damage.**

## Fitting:

Remove stock rear sets. The following parts will be used for your new rear set:



**Rear sets are pre-assembled but all screws are not tightened!** Always use locknuts or proper amount of medium thread-locking adhesive (e. g. Loctite 243). All details of assembling are shown on the backside drawing. All parts are welded into their bags as they belong together.



**The original brake-hose has to be exchanged.** A brake-hose with 52cm length and fittings with 20° and a cable clamp Ø8mm are required (LSL Article No.: 225BS52BB & V315-S08).



**This rear set is designed for racing purpose only. There are no mounting solutions for the brake light switch and the heat protector. Assure that the hose to the brake fluid reservoir has sufficient clearance to the exhaust.**

The tightening torques for connections to the frame refers to the vehicle-manufacturer's instructions. Use the following torques for all the other screw connections:

<b>M5</b>	<b>=</b>	<b>6Nm</b>	<b>=</b>	<b>4.43lbf ft</b>
<b>M6</b>	<b>=</b>	<b>10Nm</b>	<b>=</b>	<b>7.38lbf ft</b>
<b>M8</b>	<b>=</b>	<b>20Nm</b>	<b>=</b>	<b>14.75lbf ft</b>
<b>M10x1.25</b>	<b>=</b>	<b>30Nm</b>	<b>=</b>	<b>22.13lbf ft</b>

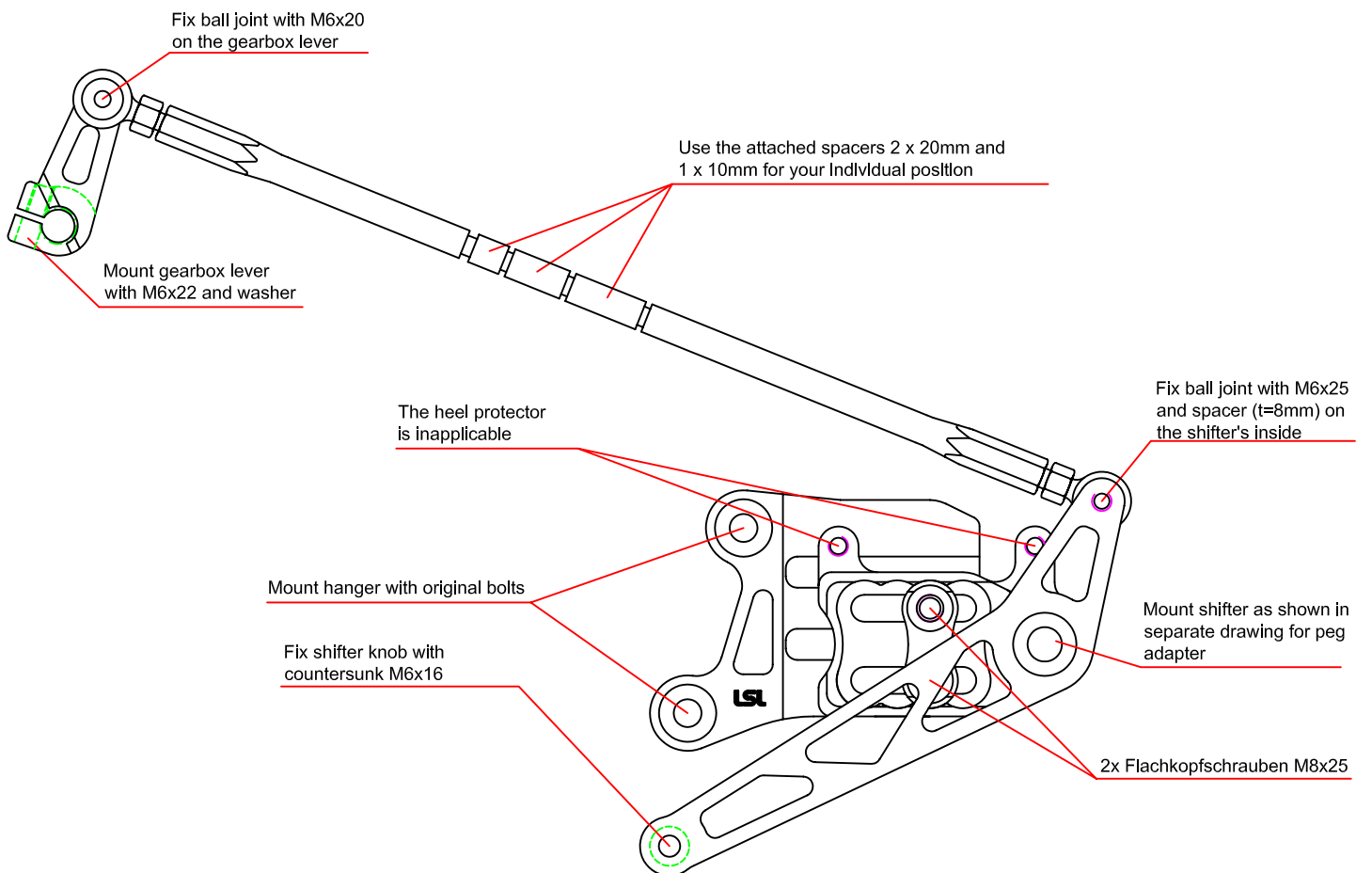
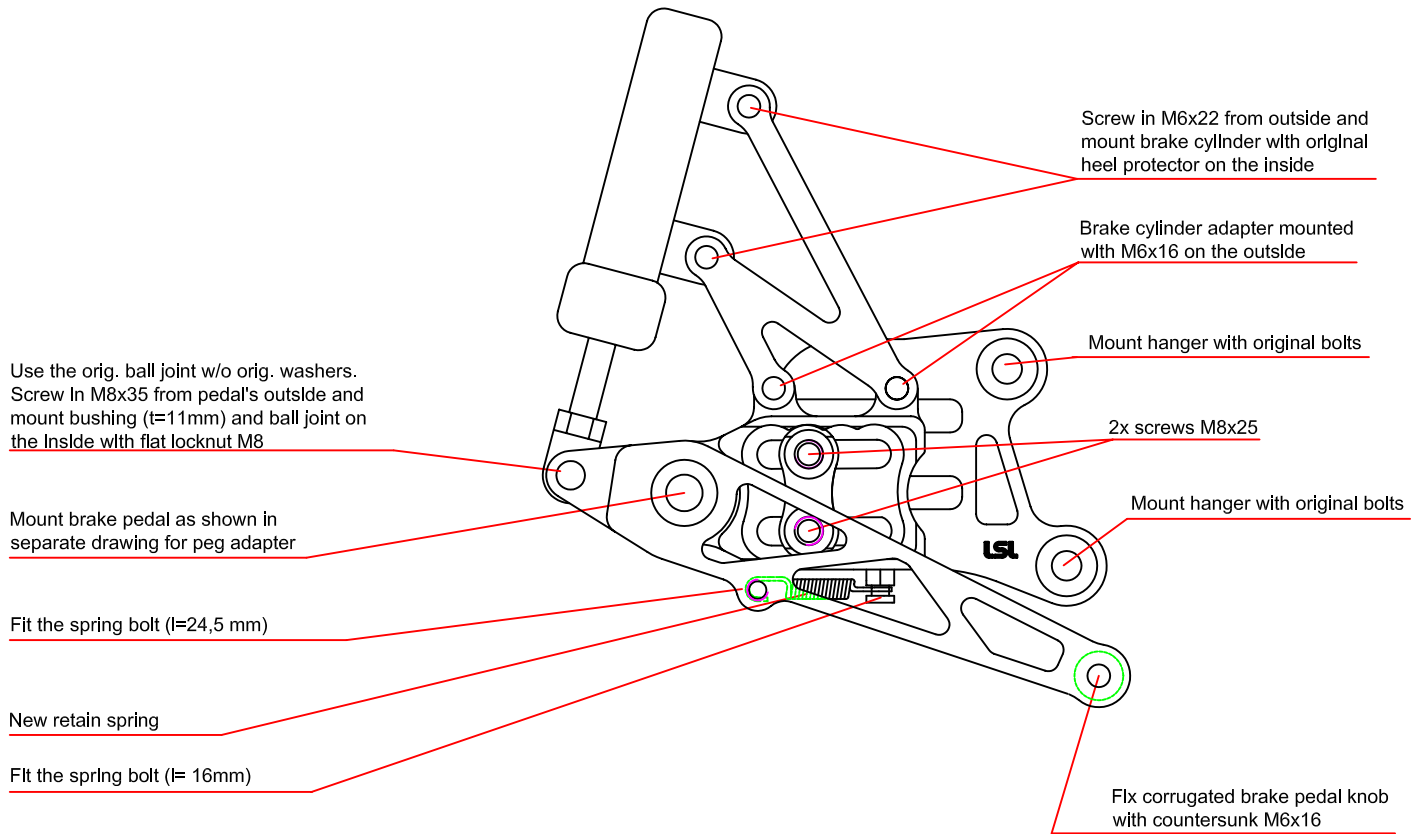


**Test brake and gear shifting indoor after installing rear set. If anything is not operating properly or braking efficiency is poor, testing on the road may result in death or serious injury!**

## Maintenance:



Periodically proof all functions during service intervals. Use **particle free (no MoS<sub>2</sub>)** lithium or barium soap grease to maintain lever bushings.



Kragenmutter M8

collar nut M8

Grundplatte

Hanger

ggf. Paßscheibe verwenden  
falls Hebel nicht beweglich

If lever is blocked use  
shim ring

Scheibe  $\varnothing 28\text{mm}$

Washer  $\varnothing 28\text{mm}$

Brems/ Schalthebel

Brake pedal/ Shifter

Scheibe  $\varnothing 25\text{mm}$

Washer  $\varnothing 25\text{mm}$

Fett

Grease

M8x40

